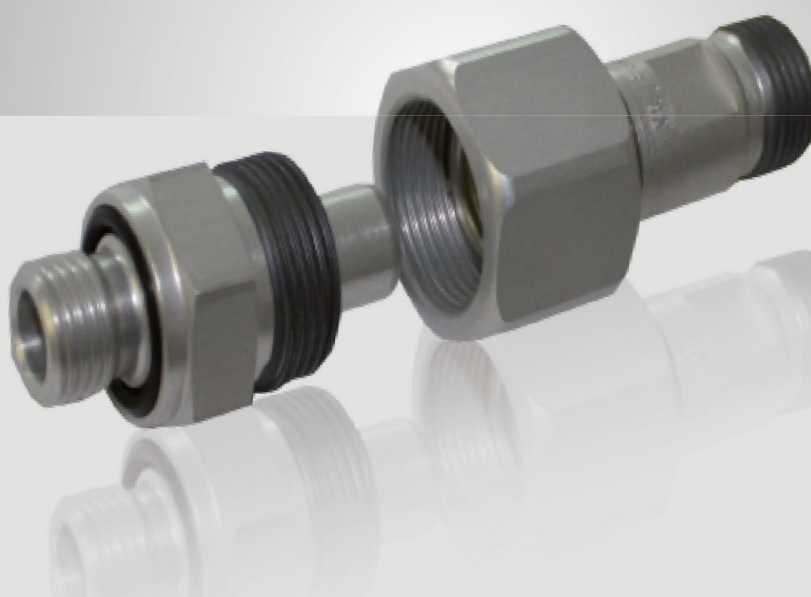


DILLO couplings DN8



The coupling allows to establish a connection by simply fitting both coupling parts into each other. Before load relieving of the coupling seats the pressure- and vacuum tight coupling is sealed inside with an O-ring during the coupling process. The coupling is forced to be open in coupled position. If both coupling sides are separated again the sealing seats shut off automatically.

All couplings are temperature-resistant from -40 °C to +80 °C.

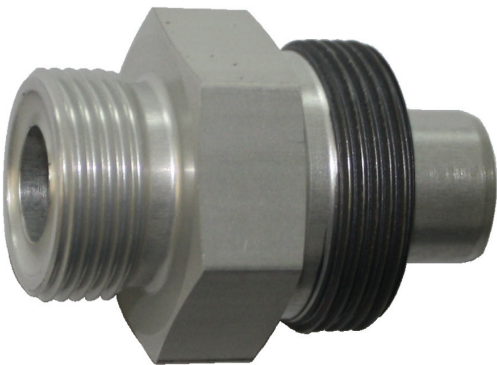
In special version these couplings are also available for a temperature range of -60 °C to +80 °C.

The suitable connecting parts for DILLO couplings must be ordered separately.

■ DILLO couplings DN8

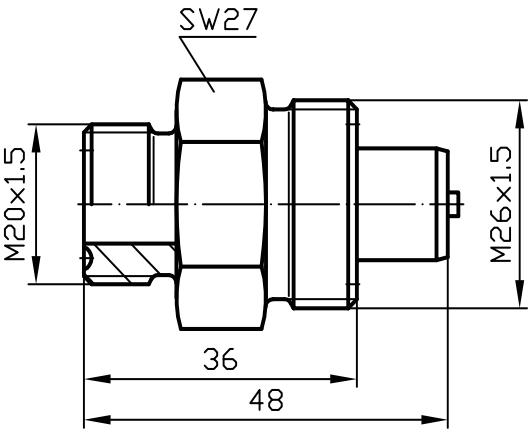
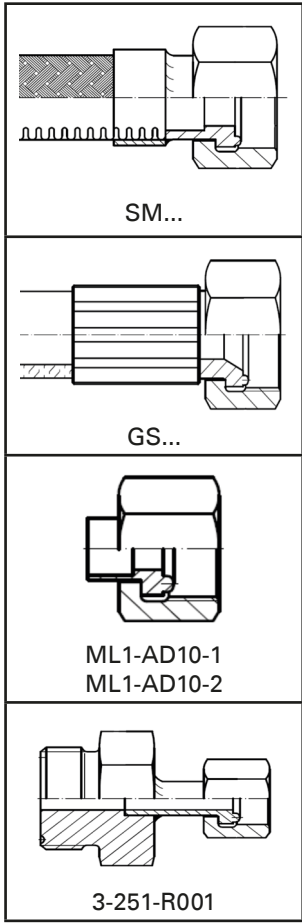
■ VK/A-02/8	Coupling groove part / A PN64 DN8	32
■ VK/B(G)-03/8	Coupling groove part PN64 DN8 with O-ring	33
■ SK-272-R001	Flange coupling PN64 DN8	34
■ SK-272-R003	Flange coupling PN64 DN8	35
■ 3-778-R001	Flange coupling PN64 DN8 with 2-hole flange	36
■ VK/KN-04/8	Covering cap für coupling groove part PN64 DN8	37
■ VK/F-02/8	Coupling tongue part PN64 DN8	38
■ 6-1161-R011	Coupling tongue part PN64 DN8 with connecting coupling for measuring device	39
■ SK-372-R020/ R021	Gauge connecting coupling PN64 DN8	40

A PN64 DN8
Coupling groove part

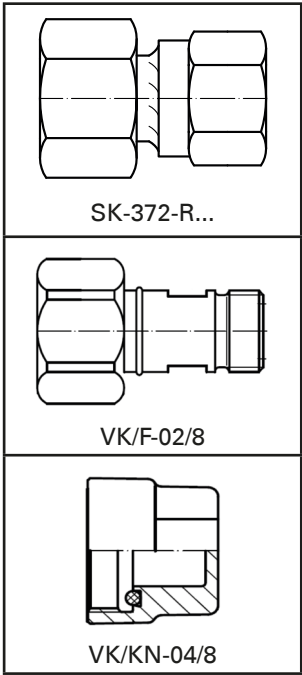


Order No.	Material
VK/A-02/8 T	AL
VK/A-02/8 E	Stainless steel
VK/A-02/8 P	Brass

Suitable connecting parts

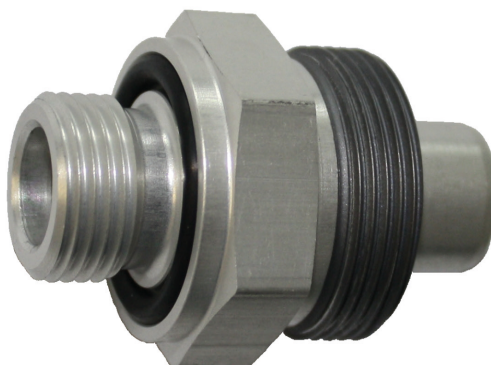


Suitable connecting parts

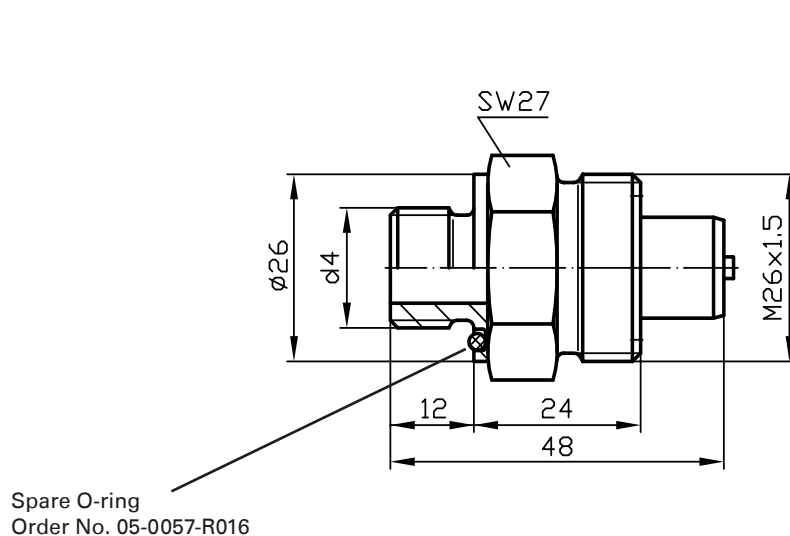


PN64 DN8

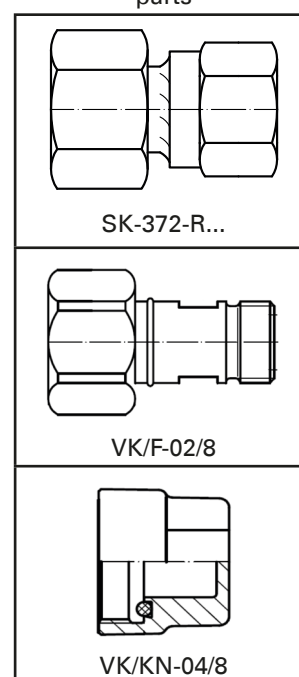
Coupling groove part with O-ring



d4	Order No.	Material
M16 x 1,5	VK/B-03/8 T	AL
M16 x 1,5	VK/B-03/8 E	Stainless steel
M16 x 1,5	VK/B-03/8 H	Brass
G 3/8 A	VK/BG-03/8 T	AL
G 3/8 A	VK/BG-03/8 E	Stainless steel
G 3/8 A	VK/BG-03/8 H	Brass



Suitable connecting parts



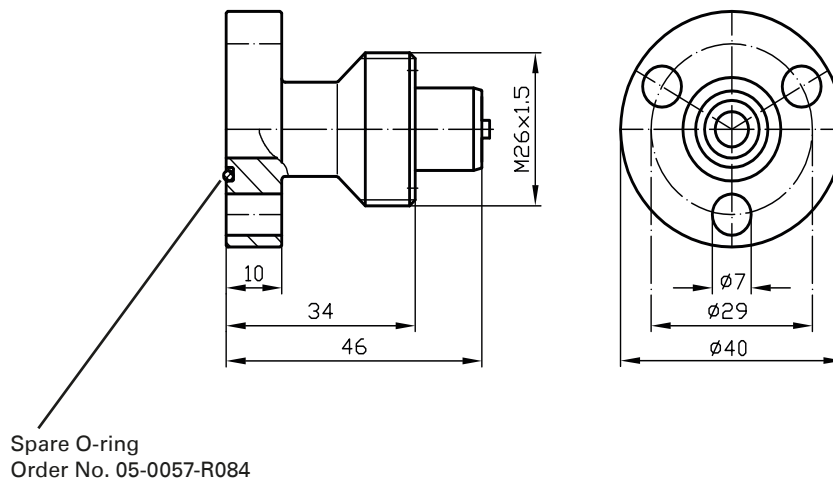
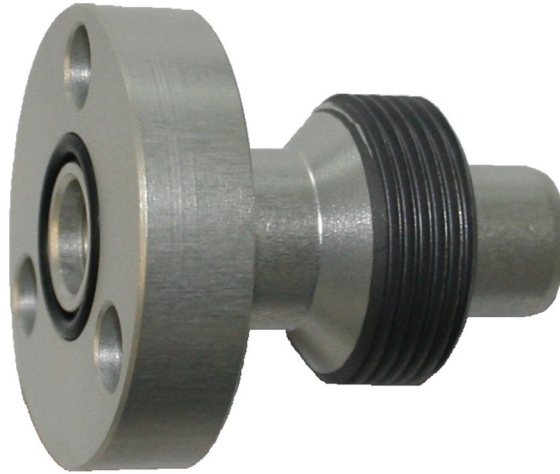
In special version the screw-in thread can also be supplied with sealing edge according to DIN 3852-1 and DIN EN ISO 1179.

PN64 DN8

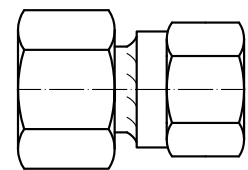
Flange coupling

Order No.: SK-272-R001 T

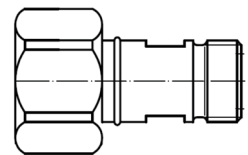
Material: AL



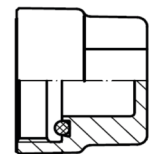
Suitable connecting
parts



SK-372-R...



VK/F-02/8



VK/KN-04/8

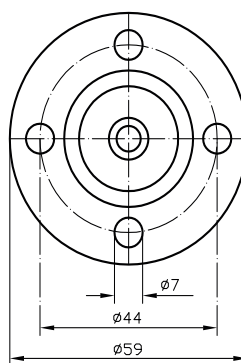
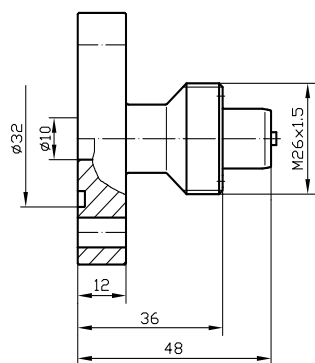
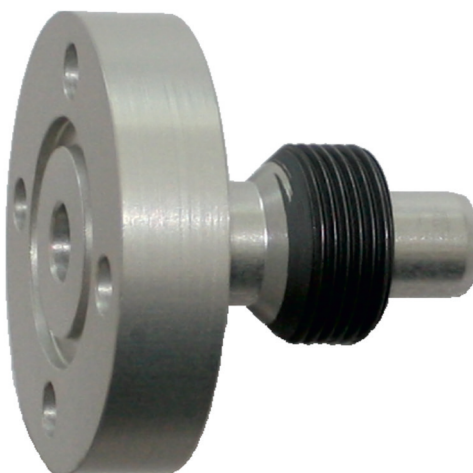
Other flanges are available on request.

PN64 DN8

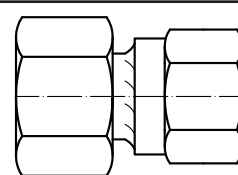
Flange coupling

Order No.: SK-272-R003 T

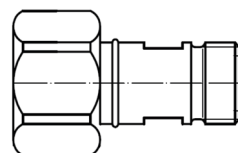
Material: AL



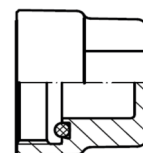
Suitable connecting parts



SK-372-R...



VK/F-02/8



VK/KN-04/8

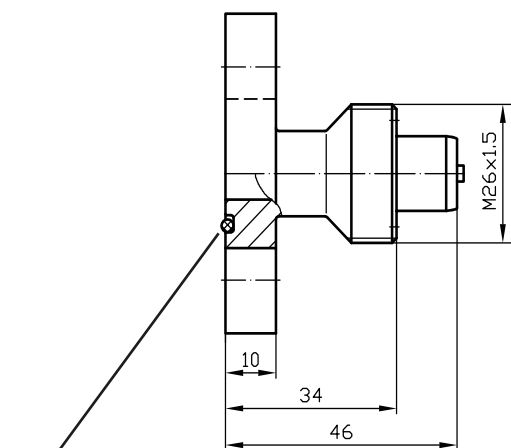
Other flanges are available on request.

PN64 DN8

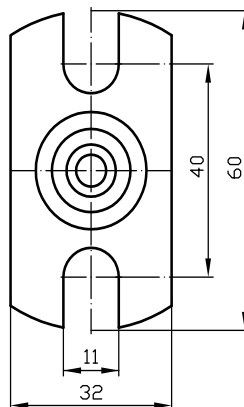
Flange coupling with 2-hole flange

Order No.: 3-778-R001 T

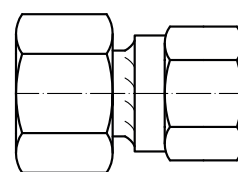
Material: AL



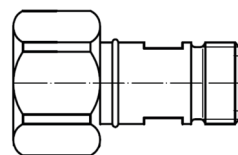
Spare O-ring
Order No. 05-0057-R125



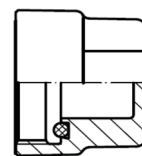
Suitable connecting
parts



SK-372-R...



VK/F-02/8



VK/KN-04/8

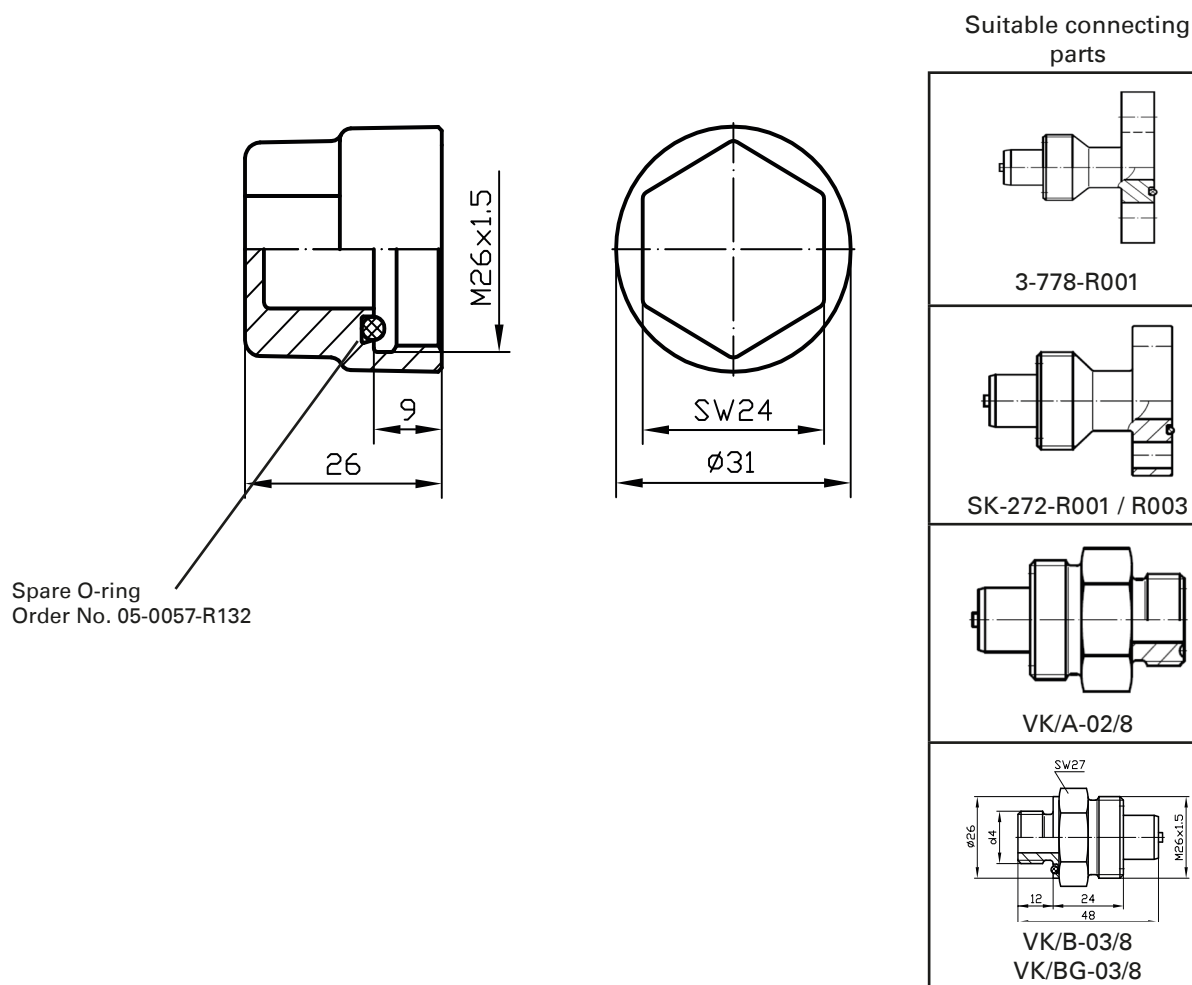
Other flanges are available on request.

PN64 DN8

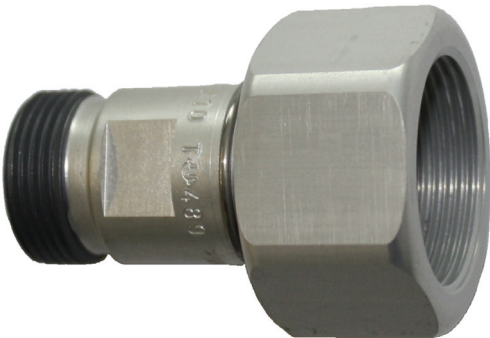
Covering cap for coupling groove part



Order No.	Material
VK/KN-04/8 T	AL
VK/KN-04/8 E	Stainless steel

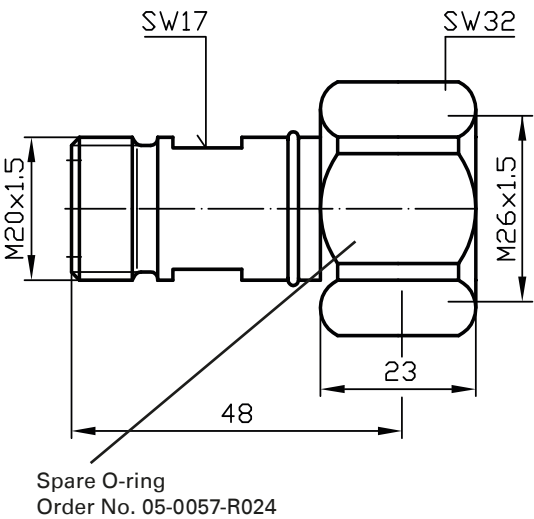
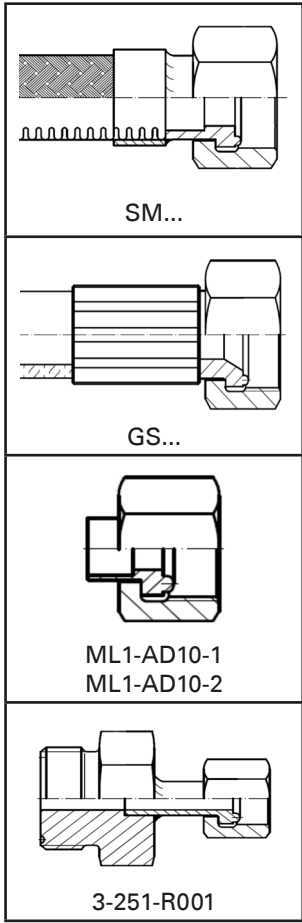


PN64 DN8
Coupling tongue part

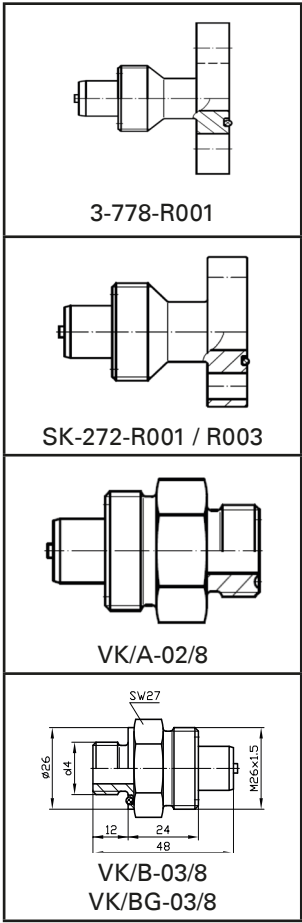


Order No.	Material
VK/F-02/8 T	AL
VK/F-02/8 E	Stainless steel
VK/F-02/8 P	Brass

Suitable connecting parts



Suitable connecting parts

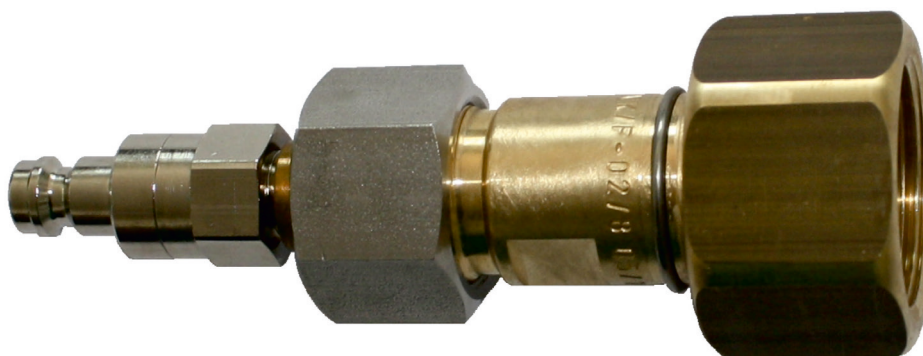


PN64 DN8

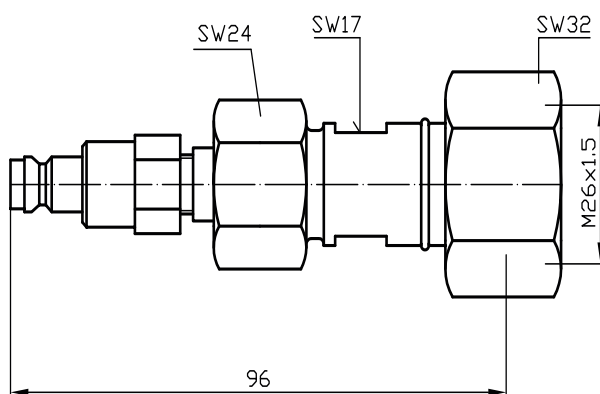
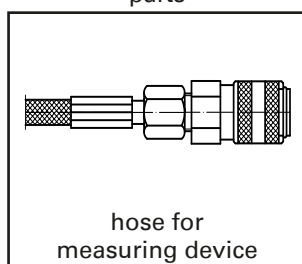
Coupling tongue part with connecting coupling for measuring device

Order No.: 6-1161-R011

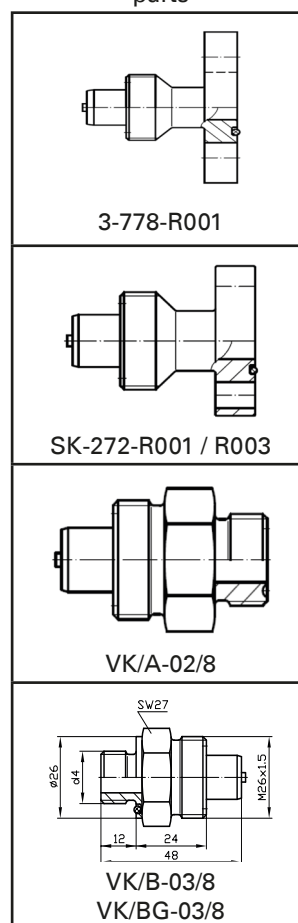
Material: Brass

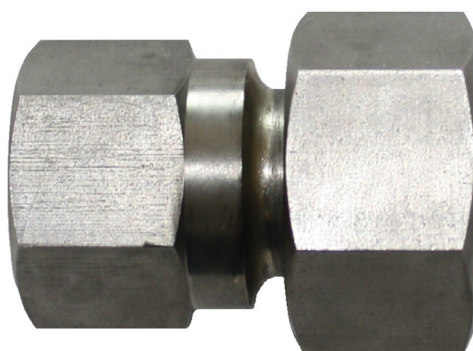


Suitable connecting
parts



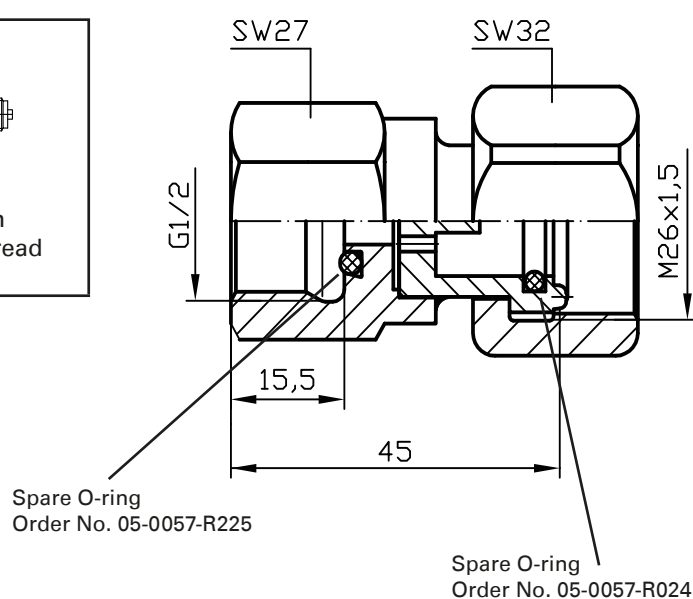
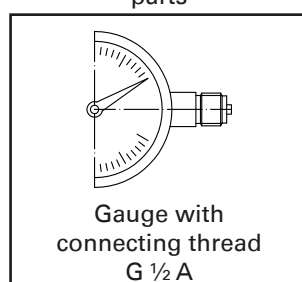
Suitable connecting
parts



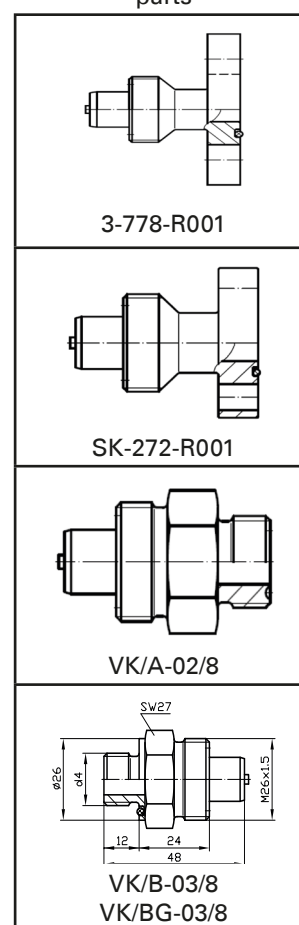
PN64 DN8**Gauge connecting coupling**

Order No.	Material
SK-372-R020 P	Brass
SK-372-R021 C	Stainless steel

Suitable connecting parts



Suitable connecting parts

**Description**

The gauge connecting coupling serves as connecting piece to a coupling groove part DN8. When coupling, a pin in the gauge connecting coupling opens the flow of the opposite coupling groove part (forced opening). This allows to read the present operating pressure on the screwed-in gauge. When disconnecting, the conical nipple of the groove part is closed by spring load (pressure and vacuum tight). If the gauge connecting coupling is not connected the gauge shows „zero pressure“. The connecting coupling allows to install the gauge in any required position (rotatable 360°).